

Large-size Display Units



- Bright displays readable over a long distance
- Rugged industrial design
- Legal-for-trade

Application

The digital display units are designed for large-size display of weight values. They are used on all industrial weighing systems which require the weight to be read from long distances, e.g. crane scales, scales for racking systems, road weigh-bridges.

Equipment

Depending on variant, characters are displayed with the use of LEDs or light-reflecting digits. The swivel housings are fixed with mounting brackets.

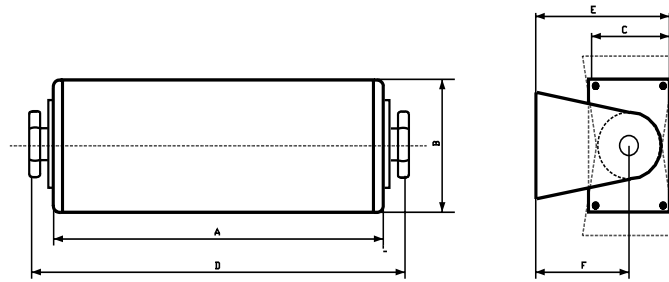
Functions

Display of the weight value with additional symbols for sign, unit and operating status.

Display dimensions



DLZ 055

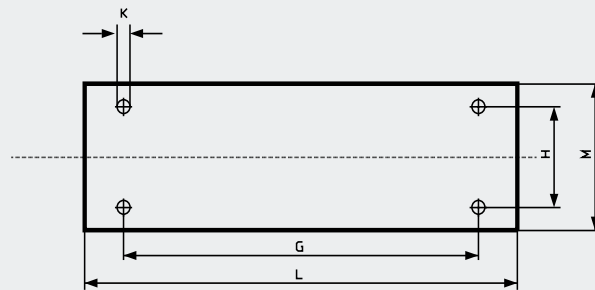


Dimensions in mm	A	B	C	D	E	F
DLZ 055	470	181	109	541	190	135
DLZ 111	945	181	109	1019	190	135

Mounting bracket dimensions



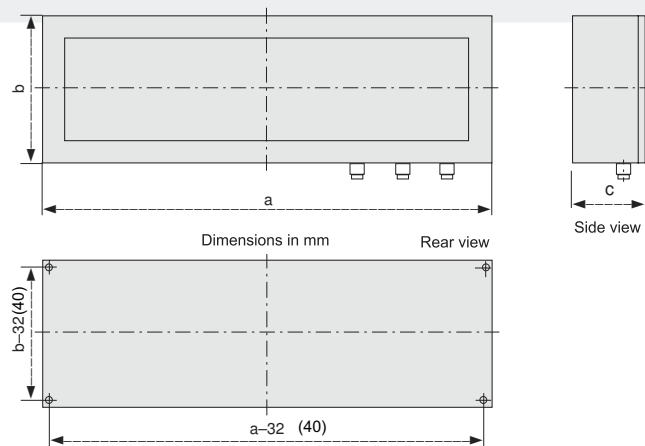
DLZ 111



Dimensions in mm	G	H	K	L	M
DLZ 055	380	70	∅ 12	480	110
DLZ 111	855	70	∅ 12	955	110



DLK 100-300
DLS 160-250



Dimensions in brackets apply to variants with 160 and 250 m digit height.

Dimensions in mm	a	b	c
DLK 100	680	245	145
DLS 160	1100	300	145
DLK 160	960	300	145
DLS 250	1730	400	165
DLK 250	1500	400	165

Technical Data

	DLZ 055 / DLZ 111	DLK 100 / DLK 160 / DLK 250	DLS 160 / DLS 250
Display principle	LED	Light-reflecting digits	LED
Colour	Digits red, matrix yellow	White	Red
Number of digits	5	5	5
Digit height [mm]	55 / 111	100 / 160 / 250	160 / 250
Unit	g / kg / t	g / kg / t	g / kg / t
Status display	Zero, tare, net Printing active	----	Zero, tare, net, no-motion
Reading distance	25 m / 50 m	40 m / 60 m / 100 m	60 m / 100 m
Protection type	IP 54	IP 54	IP 54
Temperature range	-10 ... +50°C	0 ... 55°C	0 ... 55°C
Legal-for-trade	Yes	No	ja
Mounting variant	Floor, wall and ceiling mounting	Floor, wall and ceiling mounting	Floor, wall and ceiling mounting
Weight apr.	7 kg / 11 kg	11 kg / 19 kg / 33 kg	21 kg / 40 kg
Swivel-mounted	Yes	No, bracket for swivel-mounting available as option	No, bracket for swivel-mounting available as option
Data interface	RS 423, RS 232	RS232, RS 485, TTY 20mA	RS 232
Connection to	DISOMAT Bplus, F, T	DISOMAT Bplus, F, T	
Power supply	100 ... 240 V AC (47 ... 63 Hz)	230 V AC +15/-10 % (47 ... 63 Hz)	
Max. cable length apr.	100 m	100 m	100 m

Variant	Ordering no.
DLZ 055	E 909 053.01
DLZ 111	E 909 053.02
DLK 100	E 909 054.01
DLS 160	E 909 054.02
DLK 160	E 909 054.03
DLS 250	E 909 054.04
DLK 250	E 909 054.05
Other variants, e.g.	
<ul style="list-style-type: none"> - different number of digits - non-legal-for-trade - fieldbus interface - protected to IP 65 available upon request.	