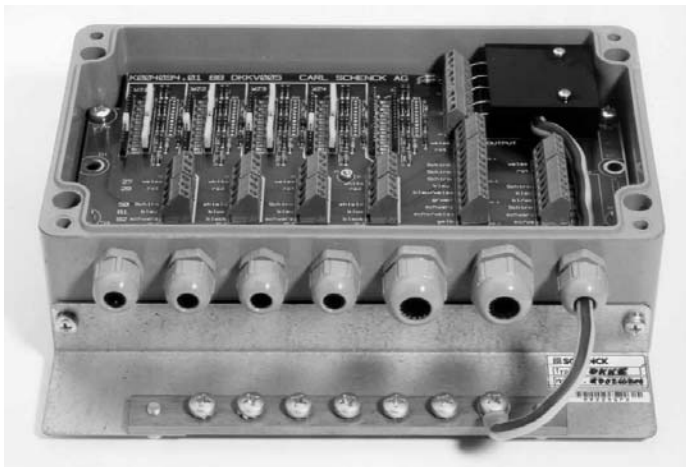


Cable Boxes Types DKK, VAK, VKK and FAK



- Easy to install
- Protected to IP 65
- Different variants for extension or summation of load cell cables
- Suitable for use in hazardous areas and severe environments
- Highly resistant to aggressive media
- Open-ended for overvoltage protection

Application

The **cable boxes**, types DKK 49 and DKK 50, are designed for extension of the load cell connecting cable.

The **cable summation boxes**, types DKK 6, DKK 69, DKK 70, and VKK 28008, are designed for interconnecting the load cells of a scale.

In case of high demands on weighing accuracy, the built-in series resistors can be used for corner adjustment.

Thanks to the plug-in jumpers (DKK 6 and VKK 28008), balancing is especially easy and time saving.

Depending on the application, the cable boxes type FAK can be used for mere extension of the load cell connecting cable and other sensor lines, but also for summation of the signals of multiple load cells (without corner adjustment).

Design

The DKK / VAK / VKK / FAK cable boxes are made of aluminium die-cast or polyester.

For easy mounting within the box, all cable connections are screwed in place.

Performance

As cable summation box, types DKK 69 and DKK 70 are available for 4 load cells, types DKK 6 and VKK 28008 for 8 load cells.

The cable summation boxes are universally applicable. For high temperatures (up to approx. +150°C depending on the measuring cable used), housings are made of aluminium.

If the cable box is exposed to aggressive media or mounted in severe environments, plastic housings are preferred.

All cable boxes DKK and VKK are equipped with potential-equalization rail for polyester housing of the potential-equalization lines.

For use in hazardous areas, cable boxes and cable summation boxes are available as EExe and EExi variants.

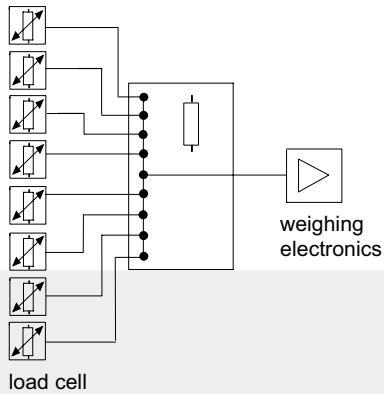
Variant	Order No. Standard Design	Order No. Variant E01 for intrinsically safe circuits in ATEX Zone 1 (Category 2G)	Order No. Variant E21 for ATEX Zone 21 (Category 2D)	Order No. Variants E02 / E22 for ATEX Zone 2 and 22 (Category 3GD)
VKK 28008 Cable summation box for max. 8 load cells, polyester housing, integrated overvoltage protection	V 041 675.B01	V 041 676.B01	on request	on request
DKK 6 Cable summation box for max. 6 load cells, polyester housing	D 707 464.02	D 707 467.02	V 038 916.B01	V 030 593.B01
DKK 69 Cable summation box for max. 4 load cells, aluminium diecast housing	D 416 195.02	D 707 097.01	V 017 271.B01	V 017 270.B01
DKK 70 Cable summation box for max. 4 load cells, polyester housing	D 416 223.02	D 707 098.01	V 029 578.B01	V 029 349.B01
DKK 49 Cable extension box, aluminium diecast housing	D 416 228.02	D 707 102.02	V 030 591.B01	V 020 164.B01
DKK 50 Cable extension box, polyester housing	D 416 229.02	D 707 100.02	V 030 592.B01	V 020 164.B02
VAK 28040 Cable box with 14 terminals , extension 1 load cell + 2 sensors or 2 load cells without corner adjustment , polyester housing	V 029 901.B01	V 029 905.B02	V 025 345.B01	V 029 905.B01
VAK 20360 Cable box with 28 terminals, 2 motors + thermo, 4 load cells, polyester housing	V 007 856.B01	-	-	-
FAK 0080 Cable box with 18 terminals, 4 load cells + 2 sensors (without corner adjustment), polyester housing	K 000 775.03	V 029 906.B02	V 025 344.B01	V 029 906.B01
VAK 20350 Cable box with 12 terminals, 16 terminals blue, 2 motors + thermo, 4 load cells, tacho, polyester housing	-	V 000 747.B01 combination EEx e and EEx i	V000747.B01	on request

Options

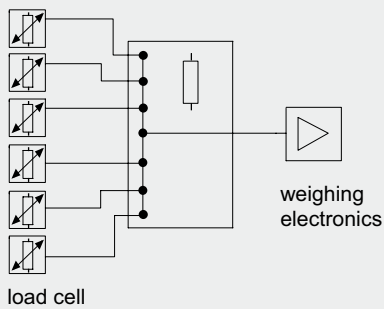
DBS 6 Overvoltage protection module for retrofit of a DKK 6	D 707 465.01
VBS 102 M Overvoltage protection module with housing, to protect the load cell resp. the weighing electronics	V 043 719.B01
VBS 001 Overvoltage protection module without housing (printed circuit board)	V 039 944.B01

Function

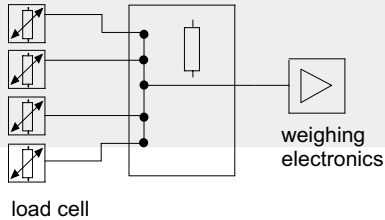
VKK 28008



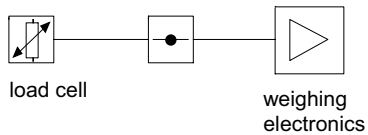
DKK 6



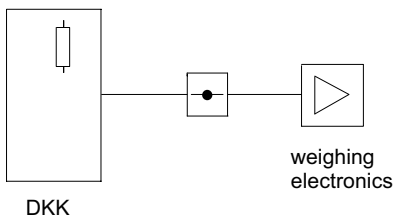
DKK 69 / DKK 70



DKK 49 / DKK 50



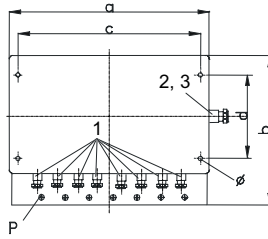
VBS 001/102 M



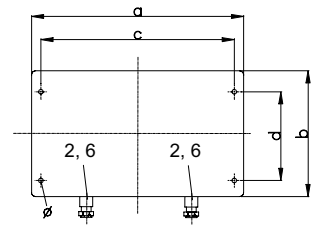
In combination of cable summation boxes with overvoltage protection (DKK 6 with DBS 6; VKK 28008) one VBS module is used close to the weighing electronics (max. 1 m).
In all other cases a 2nd VBS module is required close to the DKK / VKK!

Dimensions

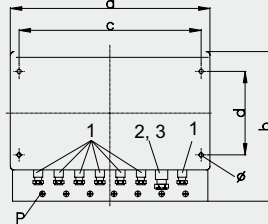
VKK 28008



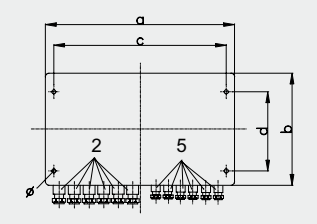
VAK 28040



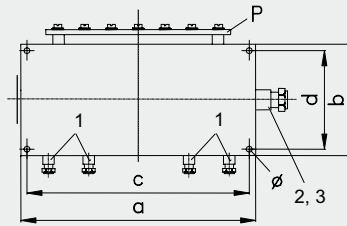
DKK 6



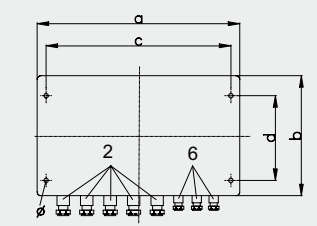
VAK 20360



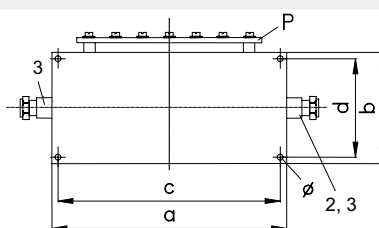
DKK 69 / DKK 70



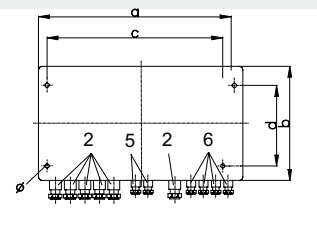
FAK 0080



DKK 49 / DKK 50 / VBS 102M



VAK 20350



P = potential-equalization rail
Standard DKK 6 / 49 / 69 / VKK 28008, optional for DKK 50 / 70

Cable inlet

- 1 = M16 Cable Ø 4.5 - 10 mm
- 2 = M20 Cable Ø 7 - 13 mm
- 3 = M20 Cable bushing Ø 5-10 mm
- 4 = M25 Cable Ø 9 - 17 mm
- 5 = M16 Cable Ø 4.5 - 10 mm
- 6 = M12 Cable Ø 3.5 - 7 mm

Dimensions						
Type	a mm	b mm	c mm	d mm	Height mm	Ø
DKK 6	260	160	240	110	90	6,5
VKK 28008	260	160	240	110	90	6,5
DKK 49	175	80	163	52	57	4,8
DKK 50	190	75	178	45	56,5	4,5
DKK 69	175	80	163	52	57	4,8
FAK 0080	220	120	204	82	90	6,3
VAK 28040	122	120	106	82	90	6,3
VAK 20350	260	160	240	110	90	6,3
VAK 20360	260	160	240	110	90	6,3